

SALE

Call: 516.380.8609 Email: cinzia@cfadesigns.net
www.cfadesigns.net



www.cfadesigns.net • cinzia@cfadesigns.net

BEAUTIFULLY DESIGNED "HIGH GLOSS" WOOD VENEER AND POLYESTER LACQUER KITCHEN HAND CRAFTED IN ITALY.
L-SHAPED CONFIGURATION WITH TALL UNITS AND COUNTER SPACE PLUS PENINSULA. LED LIGHTS THROUGHOUT.
AVAILABLE WITH ADDITIONAL SET OF DOORS.



MADE IN ITALY "CFA DESIGNS BESPOKE" KITCHEN, HIGH-END GAGGENAU APPLIANCES, FRANKE SINK and DORNBRACHT FAUCET, SILESTONE ETERNAL STATUARIO COUNTERTOP, GLOSSY ENGINEERED WOOD VENEER AND CUSTOM PEARLESCENT POLYESTER GLOSSY LACQUER, 99% BRILLIANCE. HEIGHT 8'-6" APPROX. OVERALL LENGTH: 6'-3" - REFRIGERATOR SIDE, 12'-8" - COOKTOP SIDE, PENINSULA LENGTH 7' 2" APPROX.

516.380.8609 • cinzia@cfadesigns.net



KITCHEN SPECIFICATIONS:

DOOR FINISH:	GLOSSY ENGINEERED WOOD VENEER and CUSTOM PEARLESCENT POLYESTER GLOSSY LACQUER 99% BRILLIANCE
CABINET INT.:	PALE GREY MELAMINE
HANDLES:	SATIN LACQUER ALUMINUM GROOVE, MITERED EDGE PULL
PLINTH:	SATIN LACQUER ALUMINUM
STONE:	SILTSTONE ETERNAL STATUARIO

SPECIAL FEATURES:

KESSEBOHMER ETOUCH CONVOY CENTERO PANTRY
SOFT CLOSE MOTION GLIDES on ALL DRAWERS
SOFT CLOSE HINGES
FLUSH LED LIGHTS at WALL UNITS and at ISLAND BACK PANEL
BLUM AVENTOS TIP-ON BLUMOTION at UPPER ROW

APPLIANCES and FIXTURES:

36" TOUCH-ASSIST OPENING THERMADOR REFRIGERATOR FREEZER
36" GAGGENAU COOKTOP
36" GAGGENAU HOOD
30" GAGGENAU ELECTRIC OVEN
24" GAGGENAU SPEED OVEN
24" GAGGENAU DISHWASHER
24" GAGGENAU WINE COOLER
FRANKE SINK, UNDERMOUNT, PEX SERIES, 21"
DORNBRACHT FAUCET META 02

KITCHEN SPECIFICATIONS:

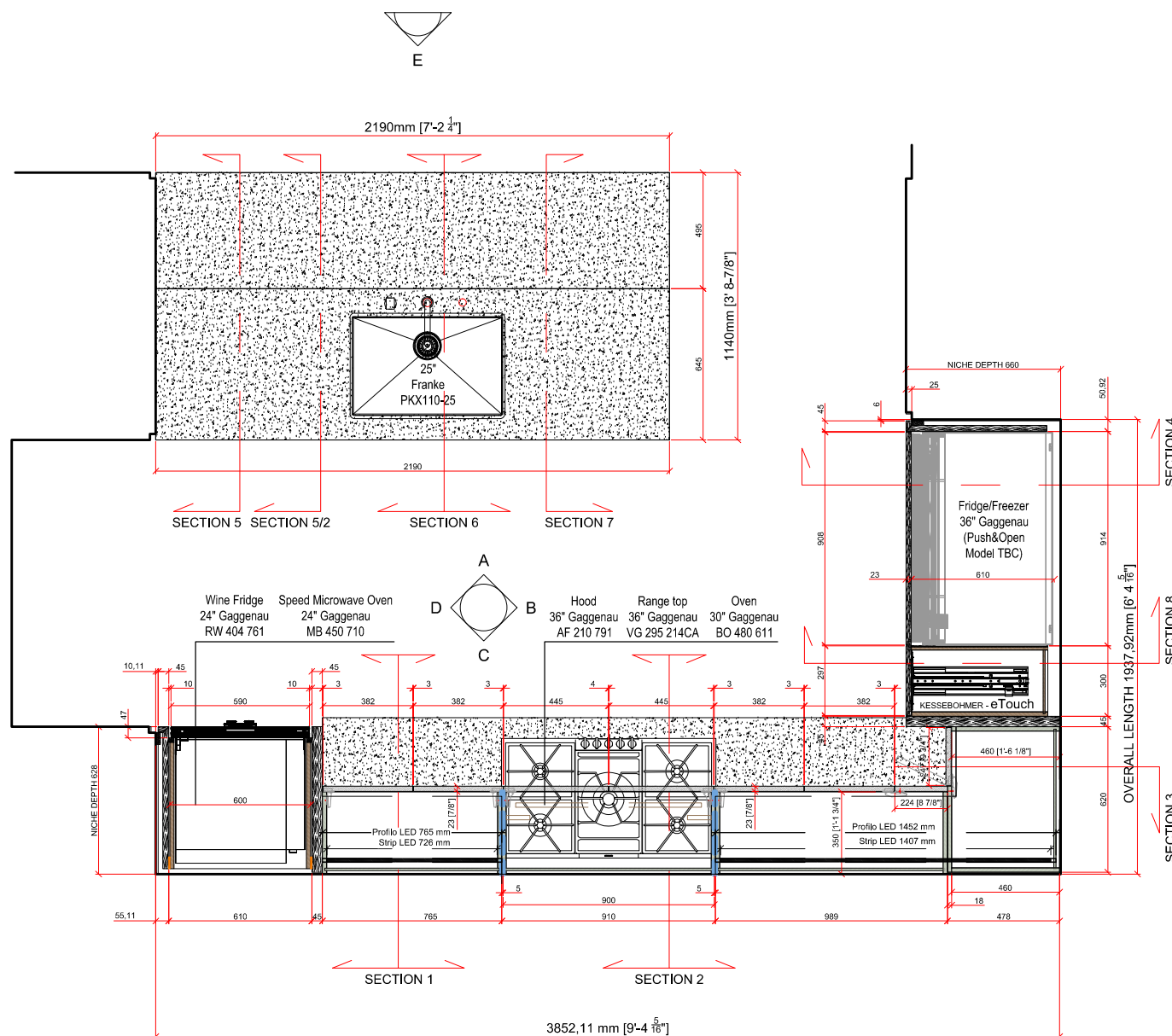
DOOR FINISH:	GLOSSY ENGINEERED WOOD VENEER and GLOSSY LACQUER 99% BRILLIANCE
CABINET INT.:	PALE GREY MELAMINE
HANDLES:	SATIN LACQUER ALUMINUM GROOVE, MITERED EDGE PULL
PLINTH:	SATIN LACQUER ALUMINUM
STONE:	SILTSTONE ETERNAL STATUARIO

SPECIAL FEATURES:

KESSEBOHMER ETOUCH CONVOY CENTRO PANTRY
SOFT CLOSE MOTION GLIDES on ALL DRAWERS
SOFT CLOSE HINGES
FLUSH LED LIGHTS at WALL UNITS and at ISLAND BACK PANEL
BLUM AVENTOS TIP-ON BLUMOTION at UPPER ROW

APPLIANCES and FIXTURES:

36" TOUCH-ASSIST OPENING THERMADOR REFRIGERATOR FREEZER
36" GAGGENAU COOKTOP
36" GAGGENAU HOOD
30" GAGGENAU ELECTRIC OVEN
24" GAGGENAU SPEED OVEN
24" GAGGENAU DISHWASHER
24" GAGGENAU WINE COOLER
FRANKE SINK, UNDERMOUNT, PEX SERIES, 21"
DORNBRACHT FAUCET META 02



KITCHEN SPECIFICATIONS:

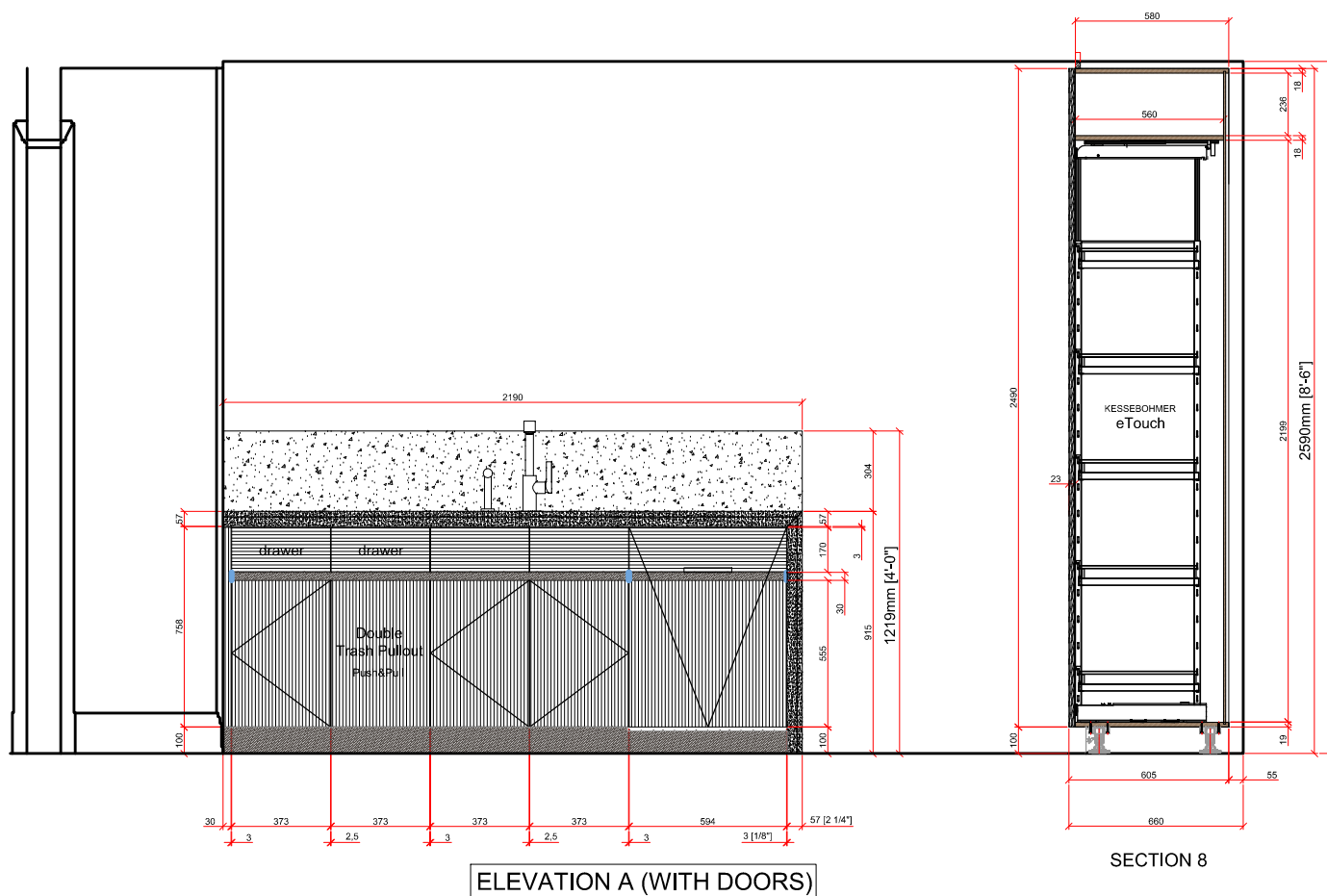
DOOR FINISH: GLOSSY ENGINEERED WOOD VENEER and GLOSSY LACQUER 99% BRILLIANCE
CABINET INT.: PALE GREY MELAMINE
HANDLES: SATIN LACQUER ALUMIN GROOVE, MITERED EDGE PULL
PLINTH: SATIN LACQUER ALUMINIUM
STONE: SILTSTONE ETERNAL STATUARIO

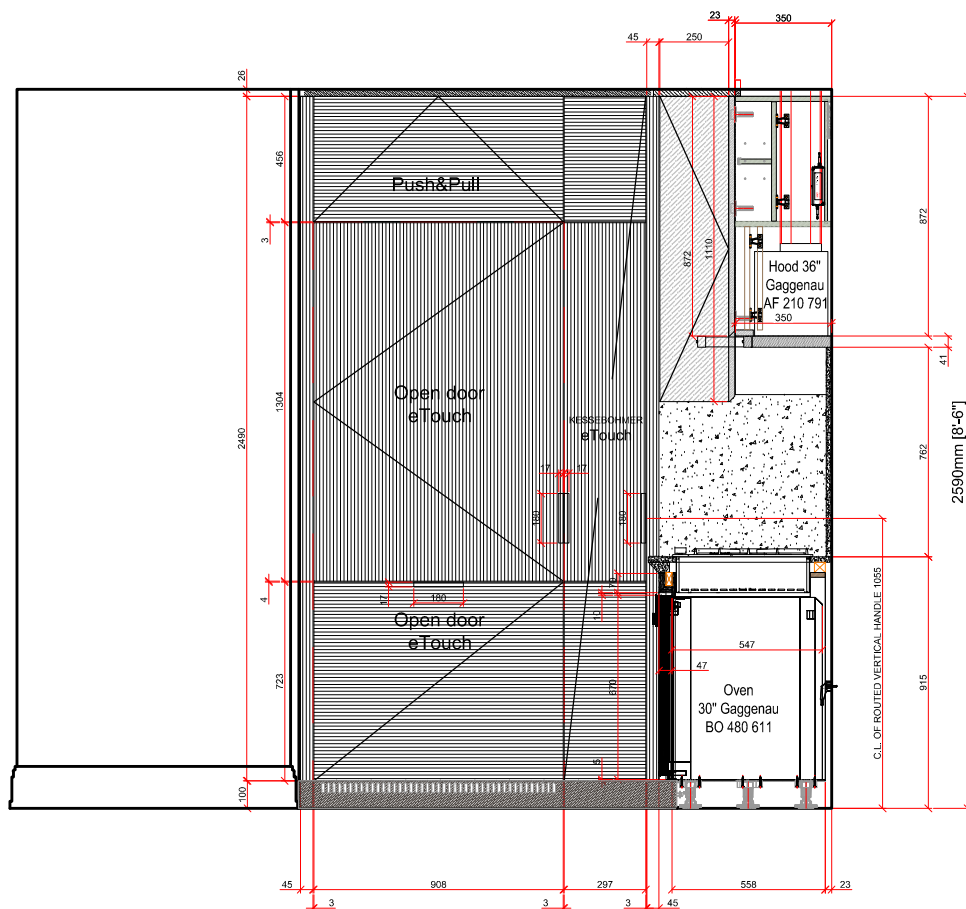
SPECIAL FEATURES:

KESSEBOHMER ETOUCH CONVOY CENTRO PANTRY
SOFT CLOSE MOTION GLIDES on ALL DRAWERS
SOFT CLOSE HINGES
FLUSH LED LIGHTS at WALL UNITS and at ISLAND BACK PANEL
BLUM AVENTOS TIP-ON BLUMOTION at UPPER ROW

APPLIANCES and FIXTURES:

36" TOUCH-ASSIST OPENING THERMADOR REFRIGERATOR FREEZER
36" GAGGENAU COOKTOP
36" GAGGENAU HOOD
30" GAGGENAU ELECTRIC OVEN
24" GAGGENAU SPEED OVEN
24" GAGGENAU DISHWASHER
24" GAGGENAU WINE COOLER
FRANKE SINK, UNDERMOUNT, PEX SERIES, 21"
DORNBRACHT FAUCET META 02





KITCHEN SPECIFICATIONS:

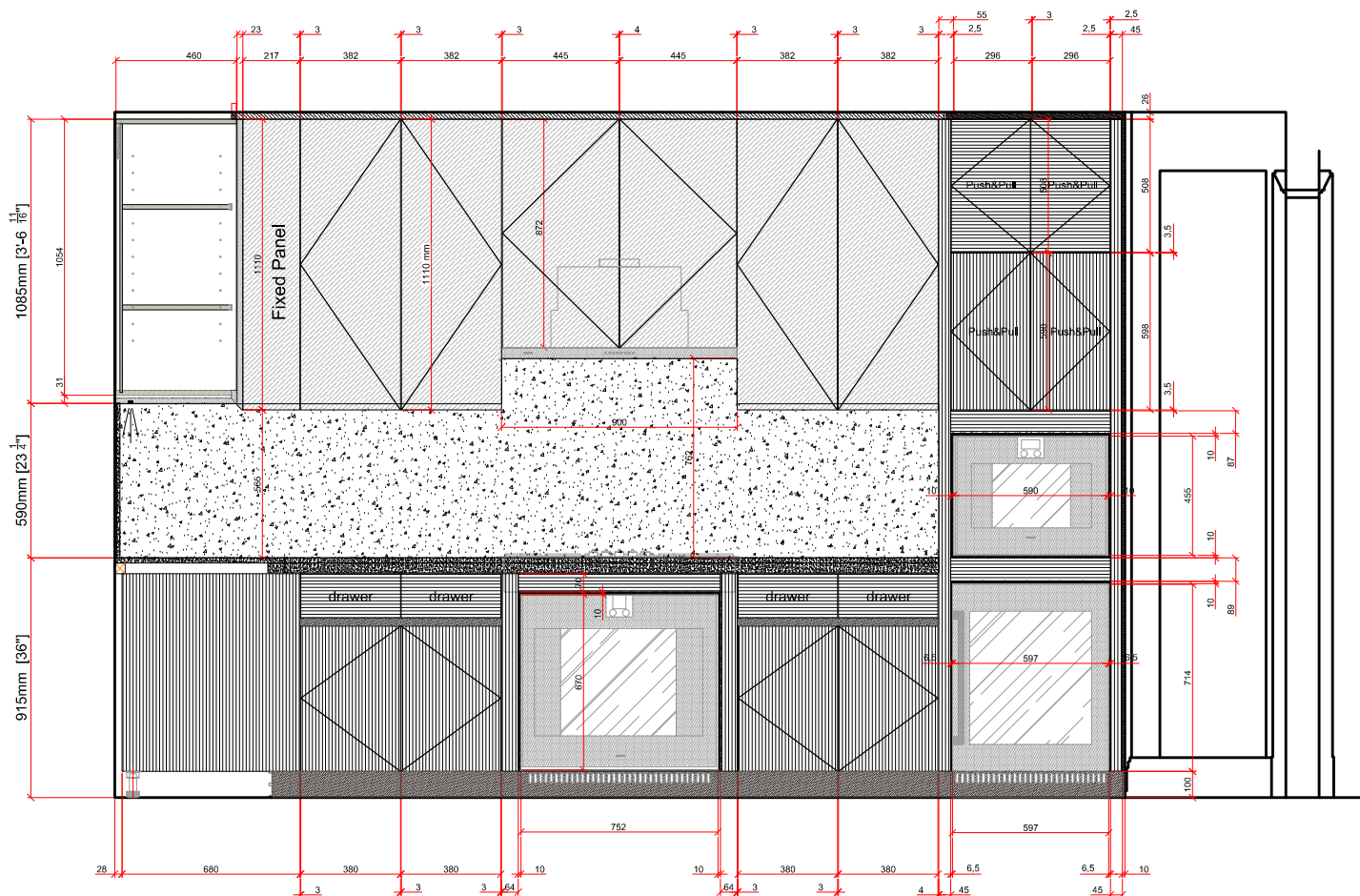
DOOR FINISH:	GLOSSY ENGINEERED WOOD VENEER and GLOSSY LACQUER 99% BRILLIANCE
CABINET INT.:	PALE GREY MELAMINE
HANDLES:	SATIN LACQUER ALUMIN GROOVE, MITERED EDGE PULL
PLINTH:	SATIN LACQUER ALUMINIUM
STONE:	SILTSTONE ETERNAL STATUARIO

SPECIAL FEATURES:

KESSEBOHMER eTOUCH CONVOY CENTRO PANTRY
SOFT CLOSE MOTION GLIDES on ALL DRAWERS
SOFT CLOSE HINGES
FLUSH LED LIGHTS at WALL UNITS and at ISLAND BACK PANEL
BLUM AVENTOS TIP-ON BLUMOTION at UPPER ROW

APPLIANCES and FIXTURES:

36" TOUCH-ASSIST OPENING THERMADOR REFRIGERATOR FREEZER
36" GAGGENAU COOKTOP
36" GAGGENAU HOOD
30" GAGGENAU ELECTRIC OVEN
24" GAGGENAU SPEED OVEN
24" GAGGENAU DISHWASHER
24" GAGGENAU WINE COOLER
FRANKE SINK, UNDERMOUNT, PEX SERIES, 21"
DORNBRACHT FAUCET META 02



SECTION 3

ELEVATION C (WITH DOORS)

KITCHEN SPECIFICATIONS:

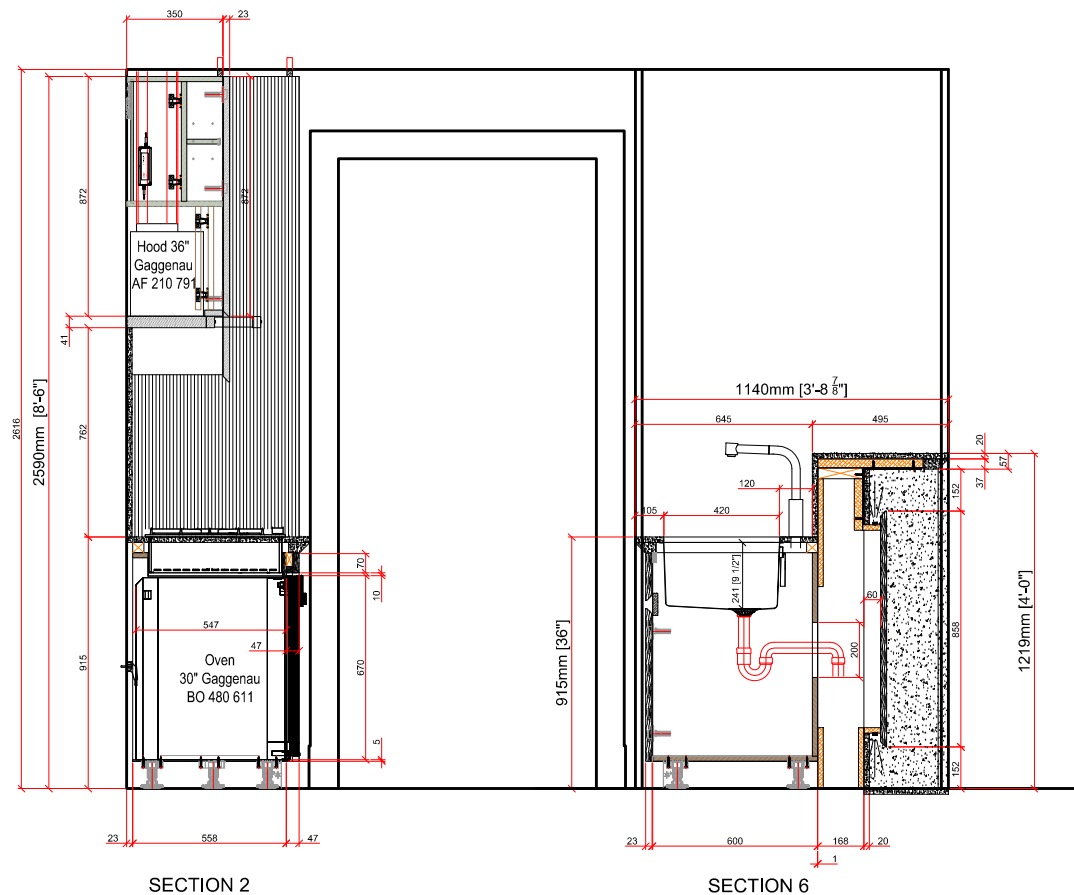
DOOR FINISH: GLOSSY ENGINEERED WOOD VENEER and GLOSSY LACQUER
99% BRILLIANCE
CABINET INT.: PALE GREY MELAMINE
HANDLES: SATIN LACQUER ALUMIN GROOVE, MITERED EDGE PULL
PLINTH: SATIN LACQUER ALUMINUM
STONE: SILTSTONE ETERNAL STATUARIO

SPECIAL FEATURES:

KESSEBOHMER ETOUCH CONVOY CENTRO PANTRY
SOFT CLOSE MOTION GLIDES on ALL DRAWERS
SOFT CLOSE HINGES
FLUSH LED LIGHTS at WALL UNITS and at ISLAND BACK PANEL
BLUM AVENTOS TIP-ON BLUMOTION at UPPER ROW

APPLIANCES and FIXTURES:

36" TOUCH-ASSIST OPENING THERMADOR REFRIGERATOR FREEZER
36" GAGGENAU COOKTOP
36" GAGGENAU HOOD
30" GAGGENAU ELECTRIC OVEN
24" GAGGENAU SPEED OVEN
24" GAGGENAU DISHWASHER
24" GAGGENAU WINE COOLER
FRANKE SINK, UNDERMOUNT, PEX SERIES, 21"
DORNBRACHT FAUCET META 02



ELEVATION D (SECTION AT OVEN/SINK)

KITCHEN SPECIFICATIONS:

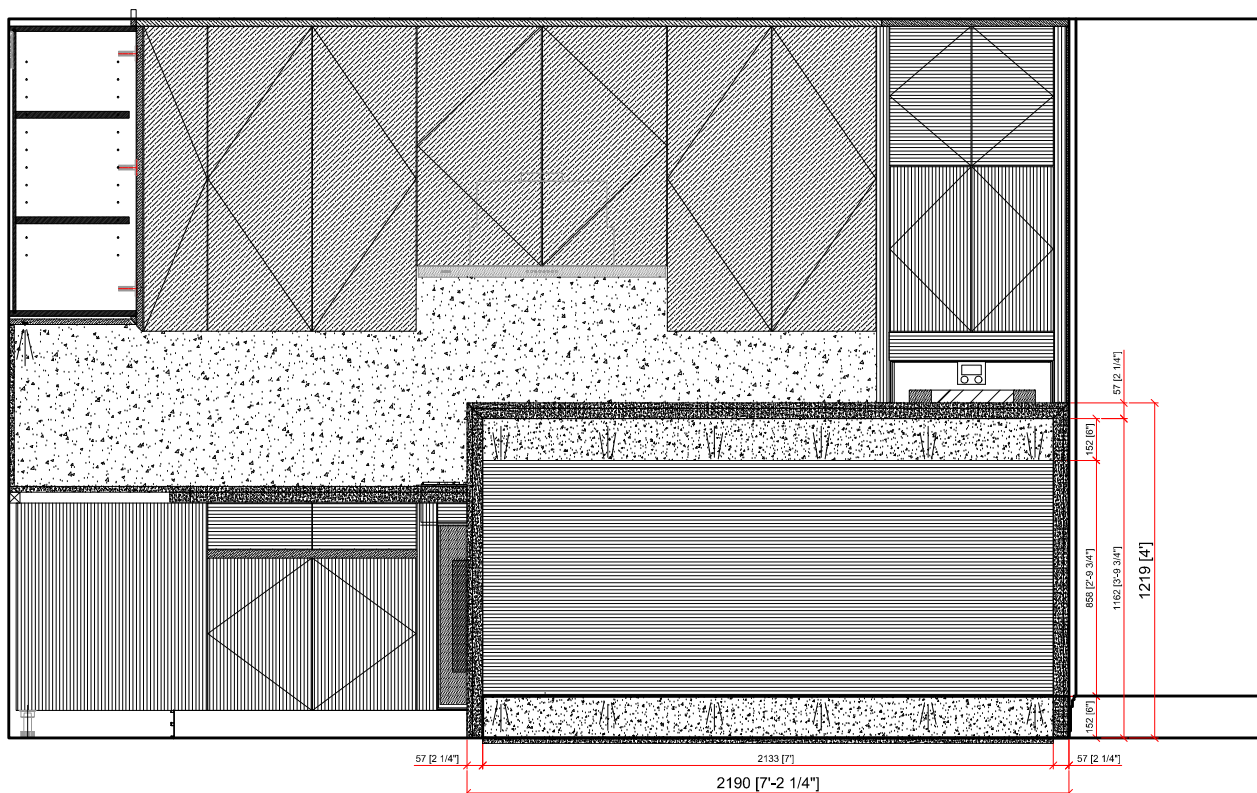
DOOR FINISH:	GLOSSY ENGINEERED WOOD VENEER and GLOSSY LACQUER 99% BRILLIANCE
CABINET INT.:	PALE GREY MELAMINE
HANDLES:	SATIN LACQUER ALUMIN GROOVE, MITERED EDGE PULL
PLINTH:	SATIN LACQUER ALUMINIUM
STONE:	SILTSTONE ETERNAL STATUARIO

SPECIAL FEATURES:

KESSEBOHMER ETOUCH CONVOY CENTRO PANTRY
SOFT CLOSE MOTION GLIDES on ALL DRAWERS
SOFT CLOSE HINGES
FLUSH LED LIGHTS at WALL UNITS and at ISLAND BACK PANEL
BLUM AVENTOS TIP-ON BLUMOTION at UPPER ROW

APPLIANCES and FIXTURES:

36" TOUCH-ASSIST OPENING THERMADOR REFRIGERATOR FREEZER
36" GAGGENAU COOKTOP
36" GAGGENAU HOOD
30" GAGGENAU ELECTRIC OVEN
24" GAGGENAU SPEED OVEN
24" GAGGENAU DISHWASHER
24" GAGGENAU WINE COOLER
FRANKE SINK, UNDERMOUNT, PEX SERIES, 21"
DORNBRACHT FAUCET META 02



ELEVATION E

KITCHEN SPECIFICATIONS:

DOOR FINISH: GLOSSY ENGINEERED WOOD VENEER and GLOSSY LACQUER 99% BRILLIANCE
CABINET INT.: PALE GREY MELAMINE
HANDLES: SATIN LACQUER ALUMIN GROOVE, MITERED EDGE PULL
PLINTH: SATIN LACQUER ALUMINUM
STONE: SILTSTONE ETERNAL STATUARIO

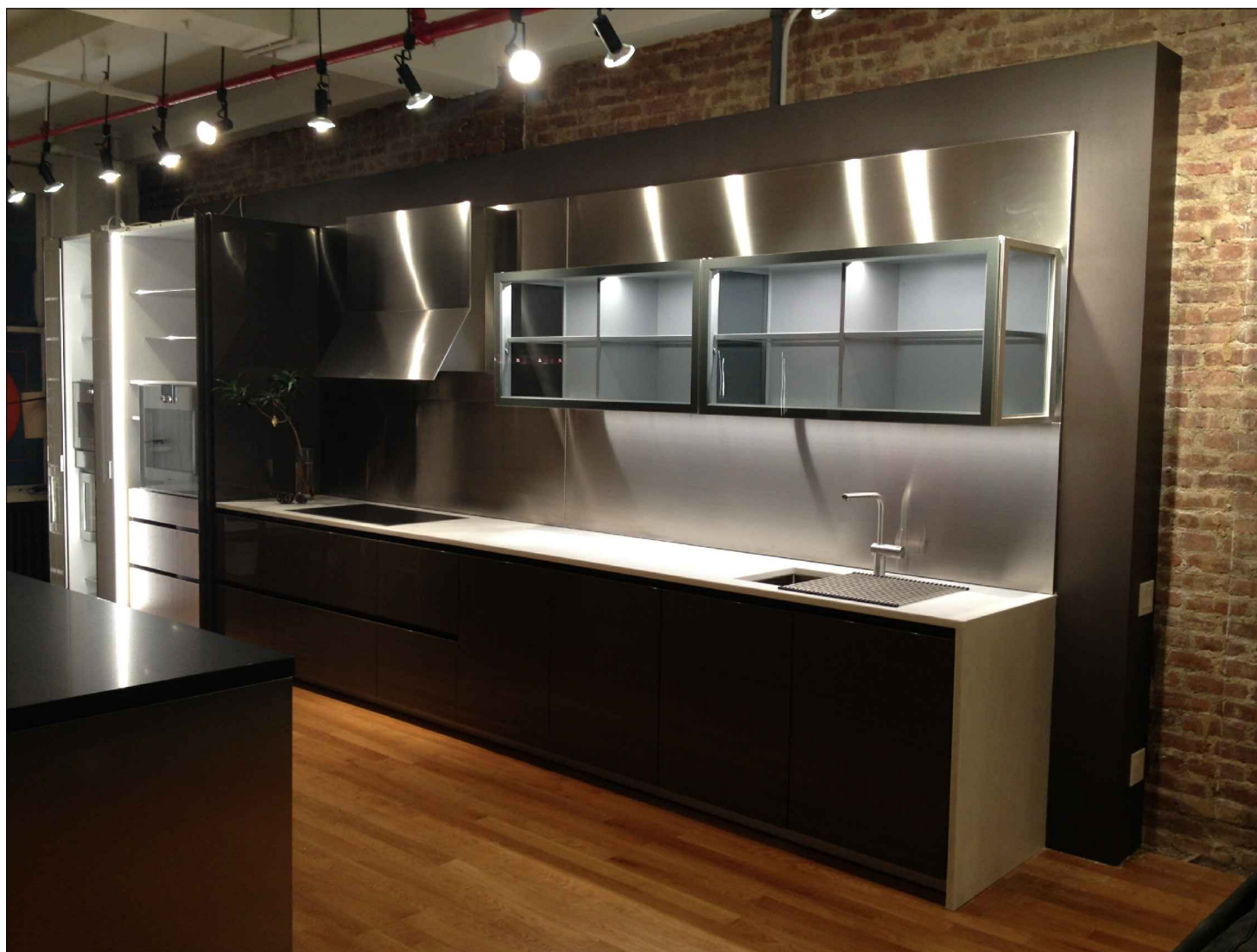
SPECIAL FEATURES:

KESSEBOHMER ETOUCH CONVOY CENTRO PANTRY
SOFT CLOSE MOTION GUIDES on ALL DRAWERS
SOFT CLOSE HINGES
FLUSH LED LIGHTS at WALL UNITS and at ISLAND BACK PANEL
BLUM AVENTOS TIP-ON BLUMOTION at UPPER ROW

APPLIANCES and FIXTURES:

36" TOUCH-ASSIST OPENING THERMADOR REFRIGERATOR FREEZER
36" GAGGENAU COOKTOP
36" GAGGENAU HOOD
30" GAGGENAU ELECTRIC OVEN
24" GAGGENAU SPEED OVEN
24" GAGGENAU DISHWASHER
24" GAGGENAU WINE COOLER
FRANKE SINK, UNDERMOUNT, PEX SERIES, 21"
DORNBRACHT FAUCET META 02

COMPLETE KITCHEN, GLOSSY LACQUER and GLASS, MADE in ITALY



ERNESTOMEDA for CFA DESIGNS KITCHEN, GAGGENAU and LIEBHERR APPLIANCES,
ERNESTOMEDA HOOD, FRANKE SINK and KWC FAUCET, CALACATTA LINCOLN COUNTERTOP,
ALL INCLUDED in SALE PRICE. LENGTH 21'-8" APPROX, HEIGHT 8'-6" APPROX.

516.380.8609 • cinzia@cfadesigns.net



KITCHEN SPECIFICATIONS:

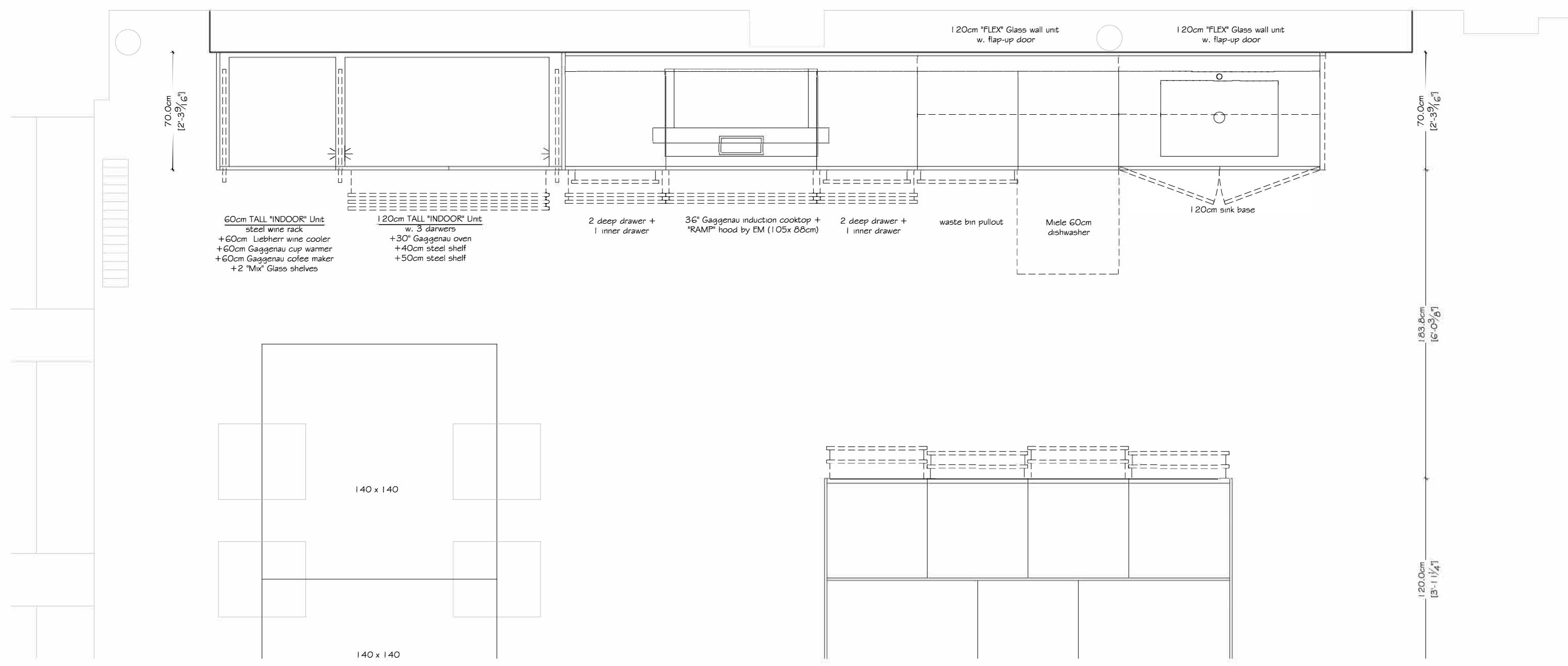
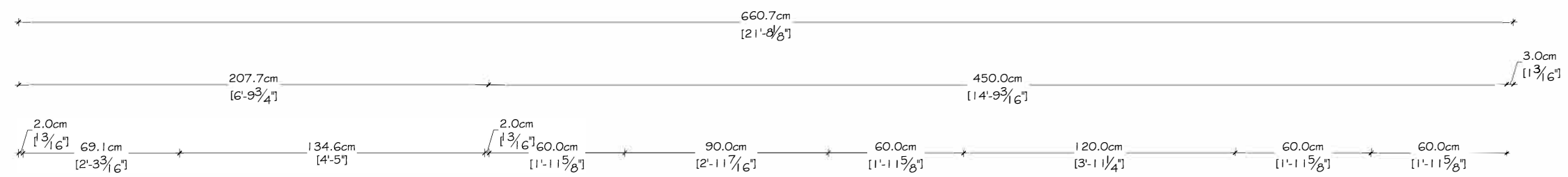
PRODUCT:	ERNESTOMEDA
MODEL:	ONE 80
DOOR FINISH:	GLOSSY LACQUER, MOCHA
CABINET INT.:	3D MELAMINE
HANDLE:	GLOSSY LACQUER GROOVE
DRWR/BSKT:	BLUM LEGRABOX
PLINTH:	STAINLESS STEEL FINISH
COUNTERTOP:	CALACATTA LINCOLN 3cm THICK
BACKSPLASH:	STAINLESS STEEL 2cm PANELS

SPECIAL FEATURES:

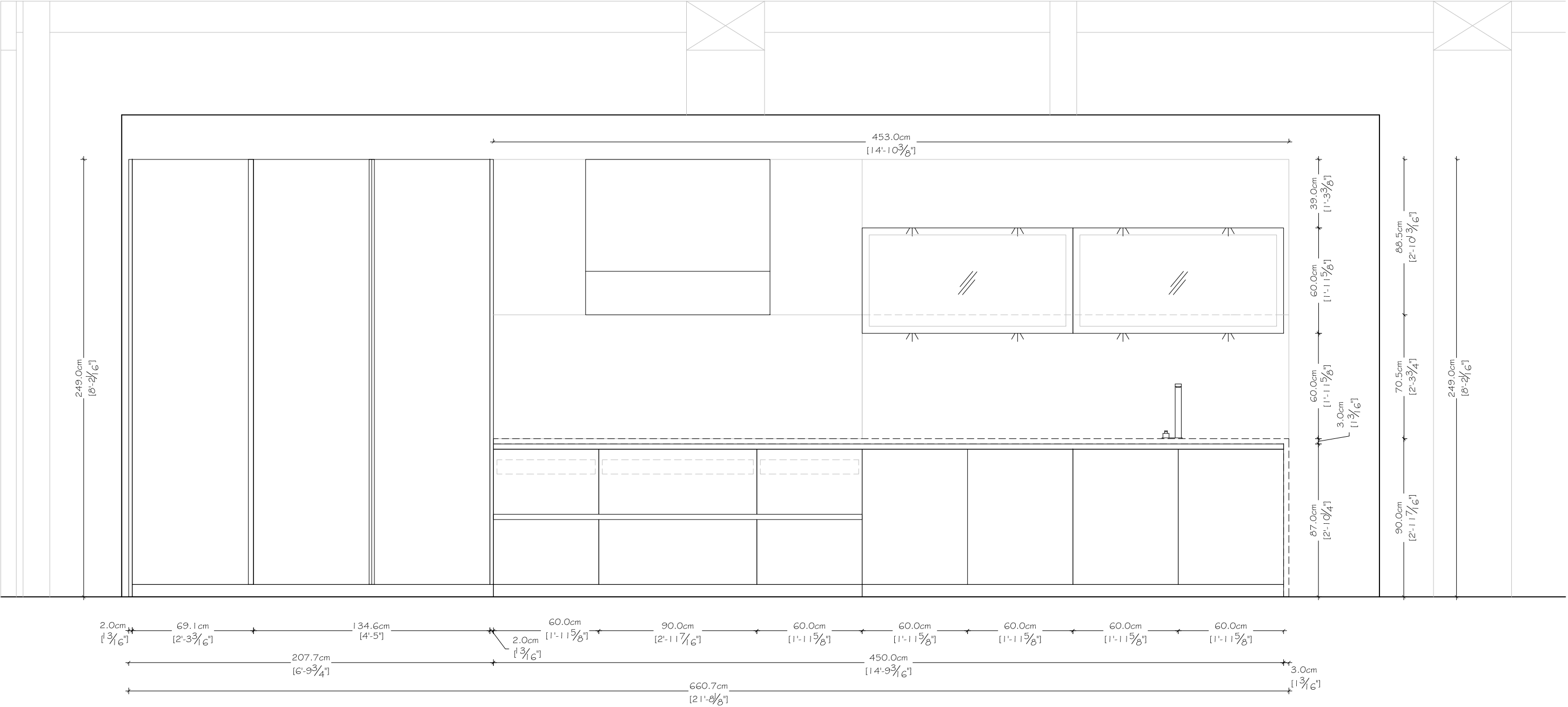
ERNESTOMEDA " RAMP" HOOD in STAINLESS STEEL
 RETRACTABLE DOORS at TALL UNITS
 VERTICAL LED LIGHTS at TALL UNITS, WALL SWITCH COMPATIBLE,
 DIMMABLE at OVEN LOCATION
 MINK OAK WOOD VENEERED BACK PANELS
 SOFT CLOSE MOTION GLIDES on ALL DRAWERS
 SOFT CLOSE HINGES
 MATS in ALL DRAWERS AND BASKETS
 ACCESSORIES AND INSERTS in DARK WOOD
 GLASS WALL UNITS W/ LED LIGHTS WALL SWITCH COMPATIBLE

APPLIANCES and FIXTURES

LIEBHERR WINE COOLER HWS 1800
 GAGGENAU COFFEE MAKER CM450710
 GAGGENAU WARMING DRAWER WS4611710
 GAGGENAU 30" WALL OVEN BO481611 400 SERIES, LH
 GAGGENAU 36" INDUCTION COOKTOP CX491610
 GAGGENAU 24" MIELE DISHWASHER G4970SCVi AM
 FRANKE SINK 28" PEAK-28
 KWC LIVELLO ALL STAINLESS STEEL FAUCET



KITCHEN PLAN



FREE STANDING FULL KITCHEN: TALL WALL and PENINSULA. A COMPLETE KITCHEN, PERFECT FOR OPEN SPACES or ALSO to INSTALL in A TRADITIONAL "KITCHEN" ROOM.



ERNESTOMEDA for CFA DESIGNS KITCHEN, SUB-ZERO and WOLF APPLIANCES, CUSTOM HOOD, FRANKE SINK and DORNBRACHT FAUCET, CAESARSTONE COUNTERTOP, ALL INCLUDED in SALE PRICE. PENINSULA AVAILABLE with DOUBLE SET OF DOORS/ PANELS: WHITE LACQUER (PICTURED) and DARK OAK VENEER. ALL INCLUDED IN SALE PRICE.

PANTRY LENGTH 9' APPROX, HEIGHT 8'-11 1/2" APPROX. PENINSULA LENGTH 8' 5 5/8" APPROX.

516.380.8609 • cinzia@cfadesigns.net



DARK OAK DOORS, APPLIED STAINLESS STEEL HANDLES



WHITE LACQUER DOORS, BUILT-IN HANDLES



DARK OAK BACK PANEL

KITCHEN SPECIFICATIONS:

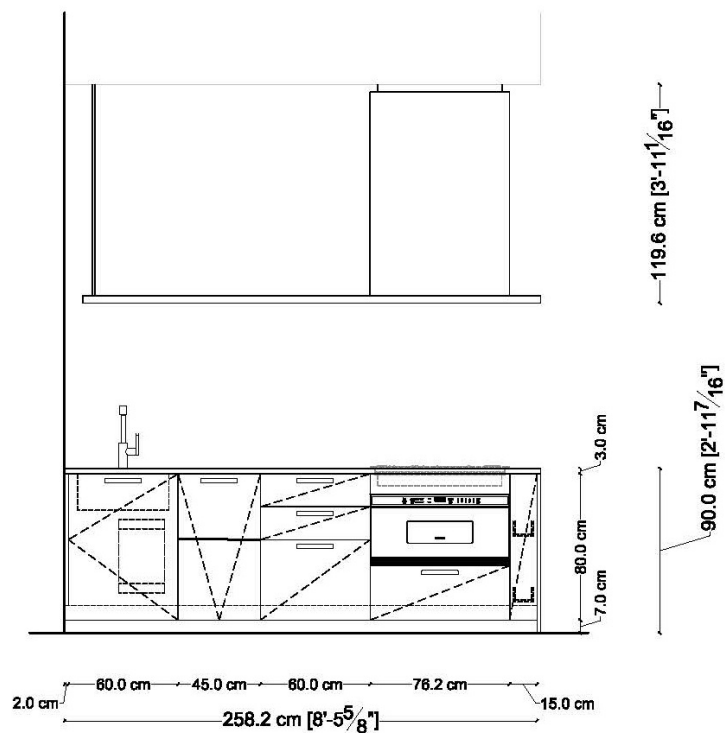
DOOR FINISH:	PENINSULA - DARK OAK VENEER and ADDITIONAL SET in WHITE MATTE LACQUER, TALL COMPOSITION in GLOSSY LACQUER.
CABINET INT.:	PALE GREY MELAMINE
HANDLES:	APPLIED HANDLE AND BUILT-IN
PLINTH:	STAINLESS STEEL
STONE:	WHITE CAESARSTONE by EM, 3 cm

SPECIAL FEATURES:

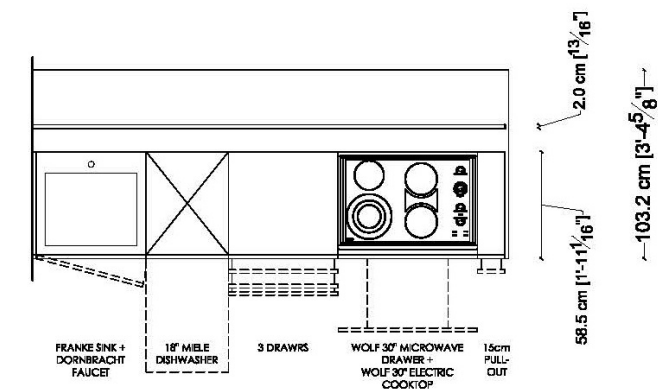
METAL BOTTOM at SINK CABINET +TRASH BIN
SOFT CLOSE MOTION GLIDES on ALL DRAWERS
SOFT CLOSE HINGES
ANTARO TANDENBOX in STEEL FINISH DRAWERS STYLE
MATS in ALL DRAWERS AND BASKETS
MOTION ACTIVATED LED LIGHTS at PANTRIES
TOUCH-LATCH OPENING at UPPER ROW

APPLIANCES and FIXTURES:

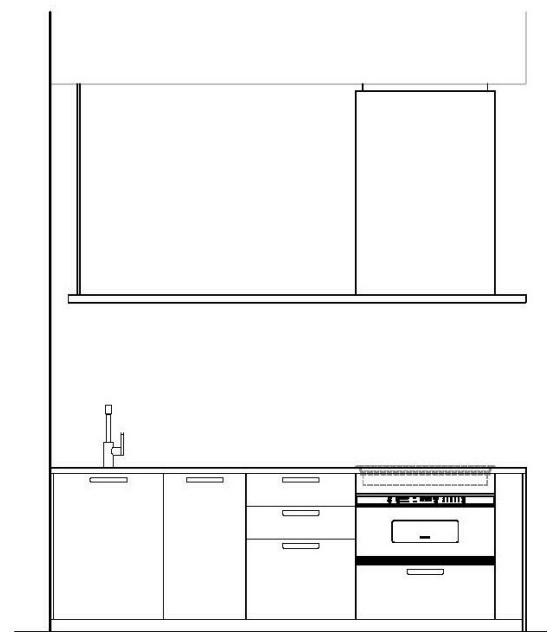
36" SUB-ZERO REFRIGERATOR/ FREEZER IT36CI, NEW
30" WOLF DOUBLE OVEN DO30CM/S, NEW
ERNESTOMEDA SHELF HOOD "REGN"
18" MIELE DISHWASHER G4780SCVi
30" WOLF ELECTRIC COOKTOP CE304/B/208, NEW
30" WOLF DRAWER MICROWAVE MD30TES, NEW
FRANKE SINK, UNDERMOUNT, PSX110199/16
DORNBRACHT FAUCET ELIO 333870790



PENINSULA: ELEVATION with INTERIOR FITTINGS(NTS)



PENINSULA: PLAN (NTS)



PENINSULA: DESIGN ELEVATION

KITCHEN SPECIFICATIONS:

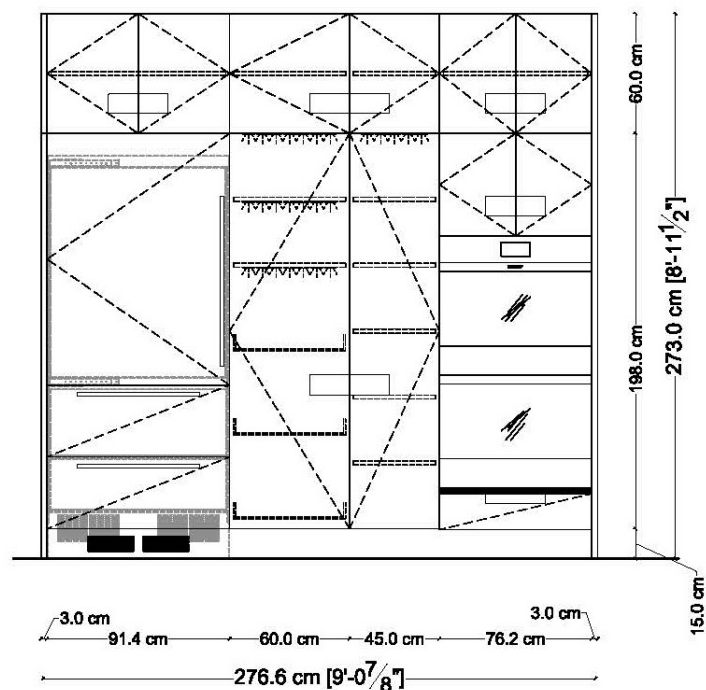
DOOR FINISH: PENINSULA - DARK OAK VENEER and ADDITIONAL SET in WHITE MATTE LACQUER; TALL COMPOSITION in GLOSSY LACQUER.
CABINET INT.: PALE GREY MELAMINE
HANDLES: APPLIED HANDLE AND BUILT-IN
PLINTH: STAINLESS STEEL
STONE: WHITE CAESARSTONE by EM, 3 cm

SPECIAL FEATURES:

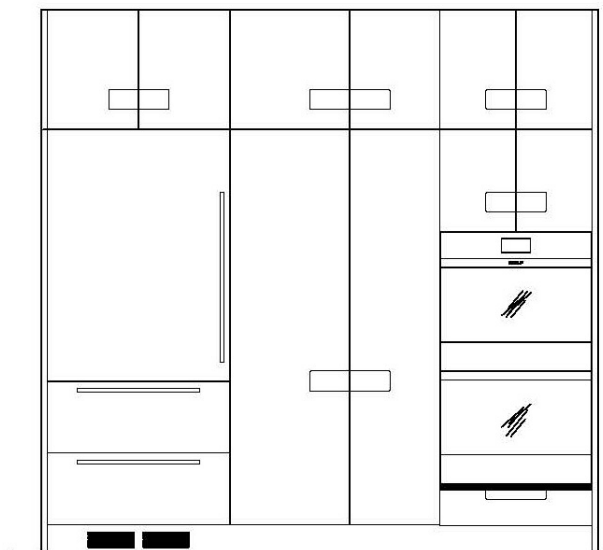
METAL BOTTOM at SINK CABINET + TRASH BIN
SOFT CLOSE MOTION GLIDES on ALL DRAWERS
SOFT CLOSE HINGES
ANTARO TANDENBOX in STEEL FINISH DRAWERS STYLE
MATS in ALL DRAWERS and BASKETS
MOTION ACTIVATED LED LIGHTS at PANTRIES
TOUCH-LATCH OPENING at UPPER ROW

APPLIANCES and FIXTURES:

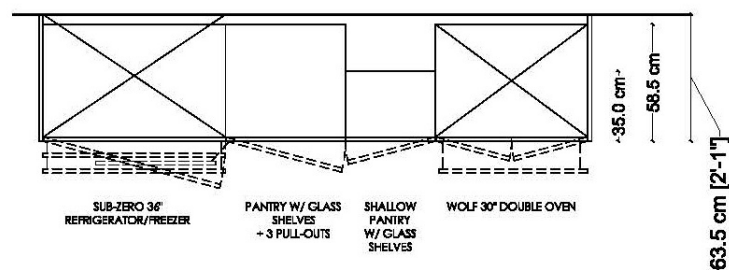
36" SUB-ZERO REFRIGERATOR/ FREEZER IT34CL, NEW
30" WOLF DOUBLE OVEN D030CM/S, NEW
ERNESTOMEDA SHELF HOOD "REGNI"
18" MIELE DISHWASHER G4780SCVI
30" WOLF ELECTRIC COOKTOP CE304/B/208, NEW
30" WOLF DRAWER MICROWAVE MD30TES, NEW
FRANKIE SINK, UNDERMOUNT, PSX 101/PP/16
DORNBRACHT FAUCET ELIO 3338/0790



TALL COMPOSITION: ELEVATION with INTERIOR FITTINGS(NTS)



TALL COMPOSITION: DESIGN ELEVATION



TALL COMPOSITION: PLAN (NTS)

KITCHEN SPECIFICATIONS:

DOOR FINISH: PENINSULA - DARK OAK VENEER and ADDITIONAL SET in WHITE MATTE LACQUER; TALL COMPOSITION in GLOSSY LACQUER.
CABINET INT.: PALE GREY MELAMINE
HANDLES: APPLIED HANDLE and BUILT-IN
PLINTH: STAINLESS STEEL
STONE: WHITE CAESARSTONE by EM, 3 cm

SPECIAL FEATURES:

METAL BOTTOM at SINK CABINET + TRASH BIN
SOFT CLOSE MOTION GLIDES on ALL DRAWERS
SOFT CLOSE HINGES
ANTARO TANDENBOX in STEEL FINISH DRAWERS STYLE
MATS in ALL DRAWERS AND BASKETS
MOTION ACTIVATED LED LIGHTS at PANTRIES
TOUCH-LATCH OPENING at UPPER ROW

APPLIANCES and FIXTURES:

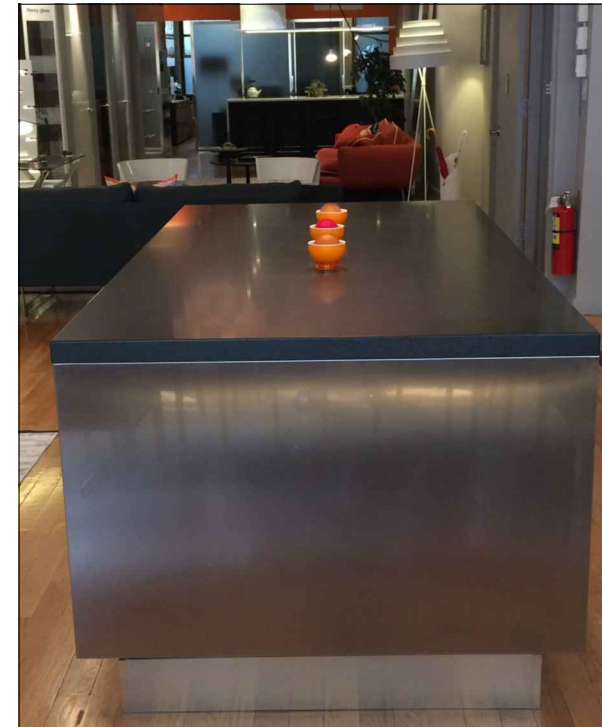
36" SUB-ZERO REFRIGERATOR/ FREEZER IT3ACL, NEW
30" WOLF DOUBLE OVEN D030CM/S, NEW
ERNESTOMEDA SHELF HOOD "REGNI"
18" MIELE DISHWASHER G4780SCVI
30" WOLF ELECTRIC COOKTOP CE304/B/208, NEW
30" WOLF DRAWER MICROWAVE MD30TES, NEW
FRANKE SINK, UNDERMOUNT, PFK 101/99/16
DORNBRACHT FAUCET ELIO 3338/0790

BEAUTIFUL, FUNCTIONAL STAINLESS STEEL ISLAND with BLACK ABSOLUTE HONED COUNTERTOP
EXCEPTIONAL STORAGE DUE to ALL DRAWERS CONFIGURATION



ERNESTOMEDA for CFA DESIGNS STEEL ISLAND OUTFITTED WITH STAINLESS STEEL BLUM PULL-OUT DRAWERS and BASKETS on BOTH SIDES and GLASS DRAWERS BOTTOM at ALL DRAWERS/ BASKETS. "AEROFILM" INVISIBLE PROTECTIVE COAT APPLIED to ALL EXTERIOR SURFACES. 5CM (2") GRANITE ABSOLUTE HONED COUNTERTOP, 2" THICK. APPROXIMATE DIMENSIONS 8' x 4'. ALL INCLUDED IN SALE PRICE.

516.380.8609 • cinzia@cfadesigns.net



KITCHEN SPECIFICATIONS:

DOOR FINISH:	STAINLESS STEEL
CABINET INT.:	PALE GREY MELAMINE
HANDLES:	"LESS", EDGE INTEGRATED, in STAINLESS STEEL FINISH,
GROOVE:	in STAINLESS STEEL FINISH
PLINTH:	STAINLESS STEEL FINISH, 15cm (6") HEIGHT
STONE:	BLACK GRANITE ABSOLUTE, HONED, 5cm(2") THICK

SPECIAL FEATURES:

GLASS BOTTOM at ALL DRAWERS
SOFT CLOSE MOTION GLIDES on ALL DRAWERS
ANTARO TANDENBOX in STEEL FINISH DRAWERS STYLE
MESH LINERS in ALL DRAWERS AND BASKETS
"AEROFILM" INVISIBLE PROTECTIVE COAT, SCRATCH & STAIN PROOF

CFA BESPOKE CUSTOM VANITY 100% MADE in ITALY WITH MIRROR MEDICINE CABINETS AND
LED LIGHT PORTAL AROUND.



CFA DESIGNS BESPOKE MASTER VANITY in GLOSSY LACQUER with MATTE LACQUER INTERIORS. POLISHED NICKEL FRAME
and LEGS, WHITE GLASS SHELF, MIRROR MEDICINE CABINETS WITH LOW IRON GLASS INTERIOR SHELVES,
LED LIGHT PORTAL ALL AROUND W/ FROSTED GLASS FASCIA & FRAME IN FINISH TO MATCH POLISHED NICKEL, SILESTONE
COUNTERTOP. APPROXIMATE DIMENSIONS 8' x 4'. ALL INCLUDED IN SALE PRICE.

FULLY MANUFACTURED IN ITALY.

516.380.8609 • cinzia@cfadesigns.net



VANITY SPECIFICATIONS:

PRODUCT:	CFA DESIGNS BESPOKE
MODEL:	CUSTOM
DOOR:	GLOSSY POLYESTER LACQUER, 99% BRILLIANCE, TO MATCH BM CHINA WHITE
CABINET INT.:	HYDRO-REPELLENT POPLAR PARTICLE BOARD MATTE LACQUERED TO MATCH BM1473 GREY HUSKIE
DRAW. STRUCT:	SOLID BEECH WOOD, MATTE LACQUERED TO MATCH BM1473 GREY HUSKIE
GLIDES:	BLUM MOVENTO BLUMOTION
CHANNEL:	POLISHED NICKEL FINISH ALUM.
LIGHTING:	FLUSH LED LIGHTING
LEGS:	POLISHED NICKEL FINISH ALUMINUM
SHELF:	WHITE GLASS W/ POLISHED NICKEL FINISH ALUMINUM FRAME
COUNTERTOP:	SILESTONE ETERNAL STATUARIO FINISH

MEDICINE CABINET SPECIFICATIONS:

DOOR:	HYDRO-REPELLENT POPLAR PARTICLE BOARD COVERED W/ MDF LACQUERED RAL 9010 W/ POLISHED NICKEL FRAME
CABINET INT.:	HYDRO-REPELLENT POPLAR PARTICLE BOARD COVERED W/ MDF LACQUERED RAL 9010
SHELVES:	LOW IRON GLASS
INT. LIGHTS:	FLUSH STRIP LED
HINGES:	BLUM CLIP TOP BLUMOTION
HANDLE:	PULL INTEGRATED INTO FRAME
LIGHT PORTAL:	LED FIXTURE W/ FROSTED GLASS FASCIA & FRAME IN FINISH TO MATCH POLISHED NICKEL

SPECIFIED FIXTURES:

SINK:	DRAVIT VERO UNDERMOUNT SINK 033304800 - 19-1/8"
FAUCET:	SYMMONS CDSLW1272-12-PNL

VANITY SPECIFICATIONS:

PRODUCT: CFA DESIGNS BESPOKE
MODEL: CUSTOM
DOOR: GLOSSY POLYESTER LACQUER, 99% BRILLIANCE, TO MATCH BM CHINA WHITE
CABINET INT.: HYDRO-REPELLENT POPLAR PARTICLE BOARD MATTE LACQUERED TO MATCH BM1473 GREY HUSKIE
DRAW. STRUCT: SOLID BEECH WOOD, MATTE LACQUERED TO MATCH BM1473 GREY HUSKIE
GUIDES: BLUM MOVENTO BLUMOTION
CHANNEL: POLISHED NICKEL FINISH ALUM.
LIGHTING: FLUSH LED LIGHTING
LEGS: POLISHED NICKEL FINISH ALUM.
SHELF: WHITE GLASS W/ POLISHED NICKEL FINISH ALUM. FRAME
COUNTERTOP: SILESTONE ETERNAL STATUARIO FINISH

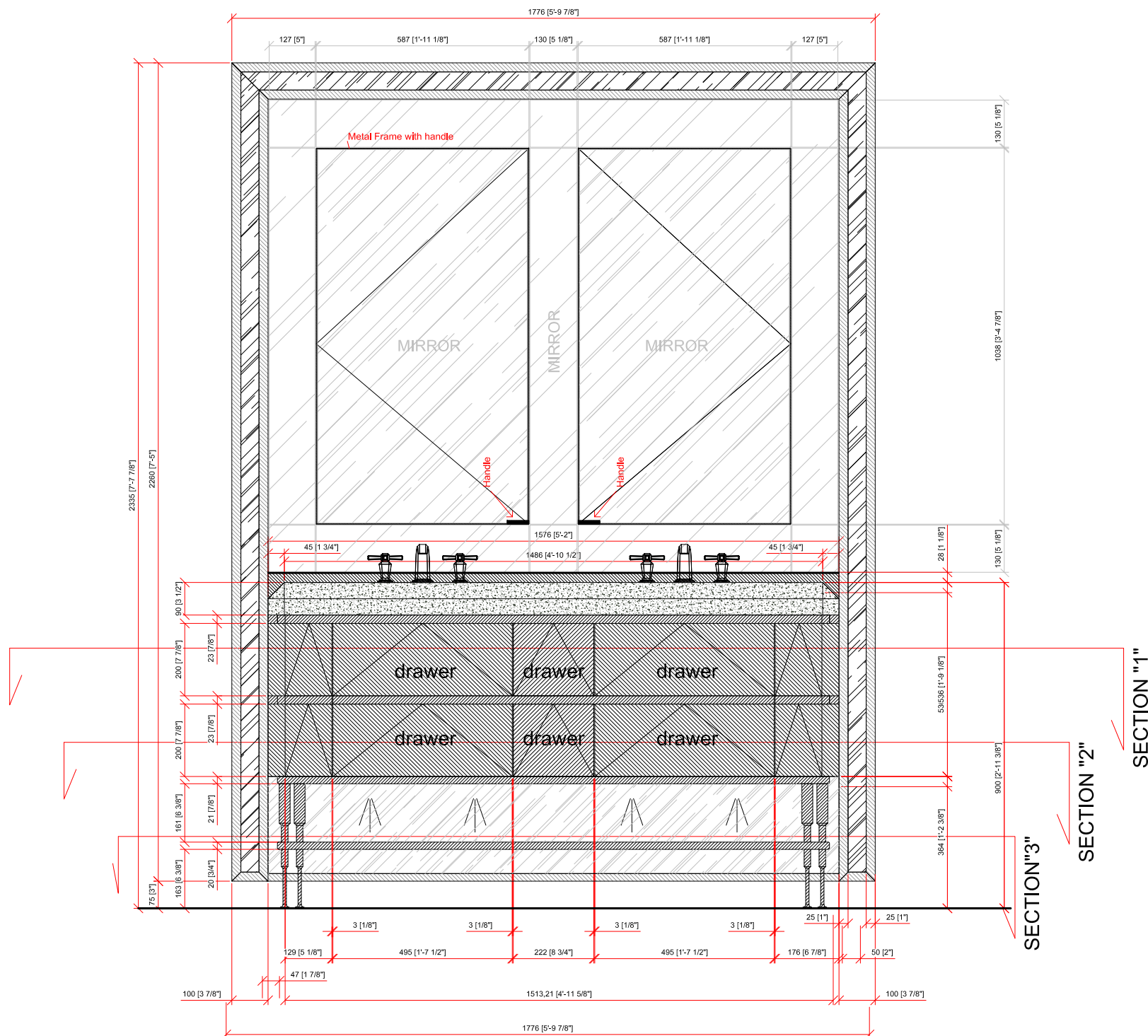
MEDICINE CABINET SPECIFICATIONS:

DOOR: HYDRO-REPELLENT POPLAR PARTICLE BOARD COVERED W/ MDF LACQUERED RAL 9010 W/ POLISHED NICKEL FRAME
CABINET INT.: HYDRO-REPELLENT POPLAR PARTICLE BOARD COVERED W/ MDF LACQUERED RAL 9010
SHELVES: LOW IRON GLASS
INT. LIGHTS: FLUSH STRIP LED
HINGES: BLUM CLIP TOP BLUMOTION
HANDLE: PULL INTEGRATED INTO FRAME
LIGHT PORTAL: LED FIXTURE W/ FROSTED GLASS FASCIA & FRAME IN FINISH TO MATCH POLISHED NICKEL

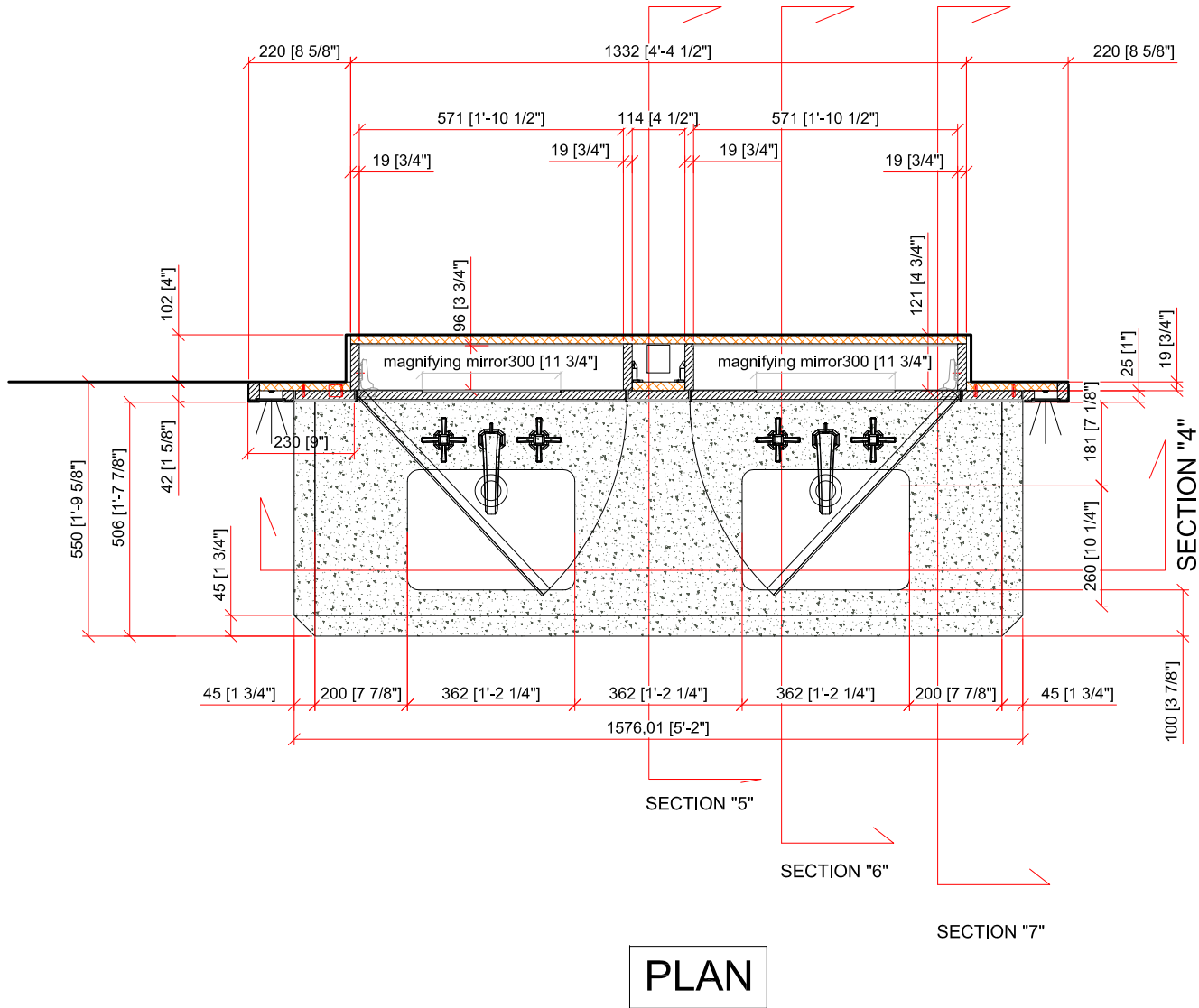
SPECIFIED FIXTURES:

SINK: DRAVIT VERO UNDERMOUNT SINK 033304800 - 19-1/8"
FAUCET: SYMMONS CDSLW1272-12-PNL

CUSTOM VANITY
100% MADE IN ITALY



FRONT ELEVATION



VANITY SPECIFICATIONS:

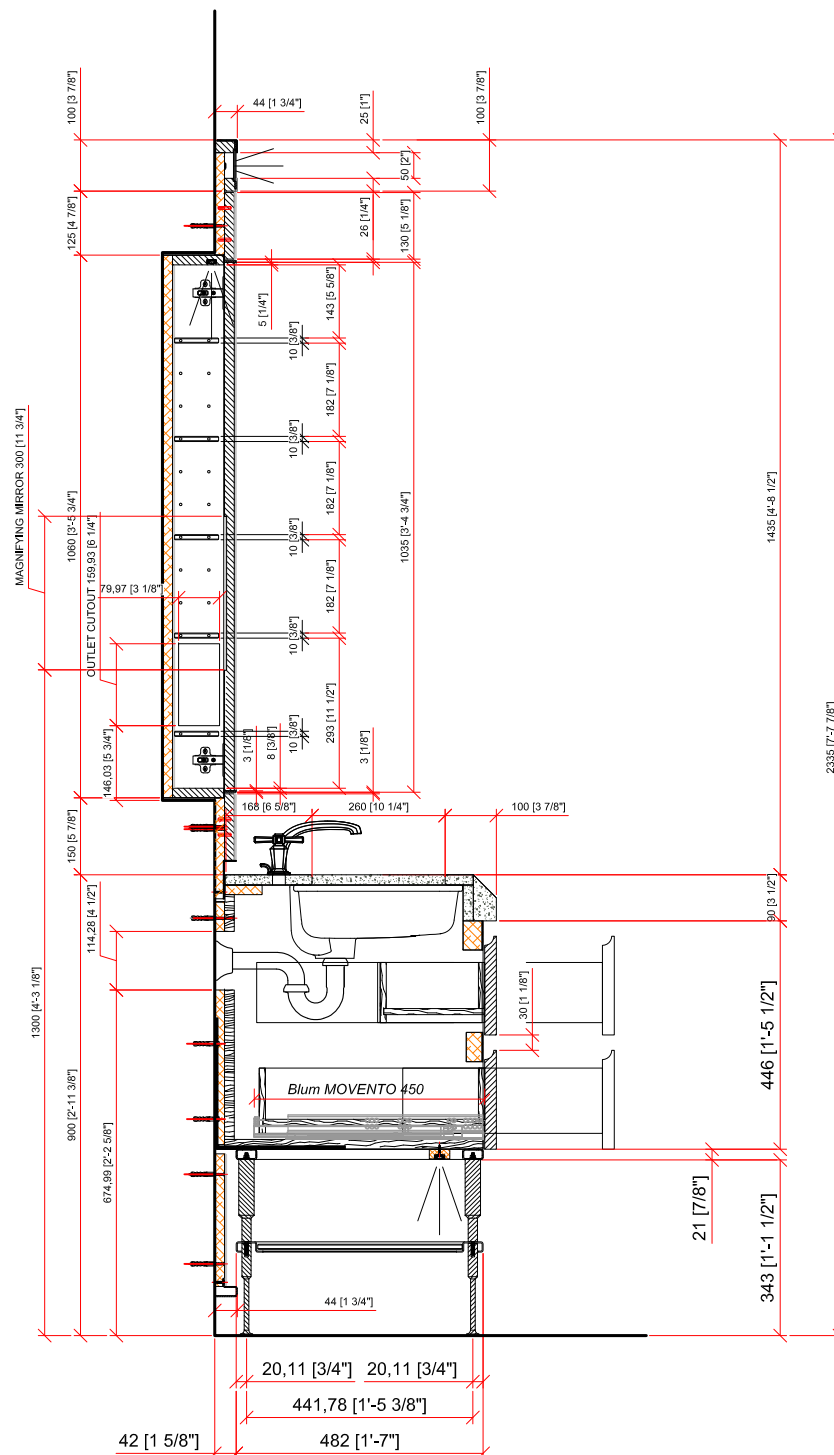
PRODUCT:	CFA DESIGNS BESPOKE
MODEL:	CUSTOM
DOOR:	GLOSSY POLYESTER LACQUER, 99% BRILLIANCE, TO MATCH BM CHINA WHITE
CABINET INT.:	HYDRO-REPELLENT POPLAR PARTICLE BOARD MATTE LACQUERED TO MATCH BM1473 GREY HUSKIE
DRAW. STRUCT:	SOLID BEECH WOOD, MATTE LACQUERED TO MATCH BM1473 GREY HUSKIE
GUIDES:	BLUM MOVENTO BLUMOTION
CHANNEL:	POLISHED NICKEL FINISH ALUM.
LIGHTING:	FLUSH LED LIGHTING
LEGS:	POLISHED NICKEL FINISH ALUM.
SHELF:	WHITE GLASS W/ POLISHED NICKEL FINISH ALUM. FRAME
COUNTERTOP:	SILESTONE ETERNAL STATUARIO FINISH

MEDICINE CABINET SPECIFICATIONS:

DOOR:	HYDRO-REPELLENT POPLAR PARTICLE BOARD COVERED W/ MDF LACQUERED RAL 9010 W/ POLISHED NICKEL FRAME
CABINET INT.:	HYDRO-REPELLENT POPLAR PARTICLE BOARD COVERED W/ MDF LACQUERED RAL 9010
SHELVES:	LOW IRON GLASS
INT. LIGHTS:	FLUSH STRIP LED
HINGES:	BLUM CLIP TOP BLUMOTION
HANDLE:	PULL INTEGRATED INTO FRAME
LIGHT PORTAL:	LED FIXTURE W/ FROSTED GLASS FASCIA & FRAME IN FINISH TO MATCH POLISHED NICKEL

SPECIFIED FIXTURES:

SINK:	DRAVIT VERO UNDERMOUNT SINK 033304800 - 19-1/8"
FAUCET:	SYMMONS CDSLW1272-12-PNL



CUSTOM VANITY
100% MADE IN ITALY

BEAUTIFUL BATHROOM VANITY BY RIFRA, MADE in ITALY.

MODEL "K.ONE". HIGHT-GLOOSS LACQUER WITH CORIAN SINK. ALL PLUMBING AND ACCESSORIES INCLUDED



LARGE WALL HUNG STORAGE COMPONENTS ARE FULLY LACQUERED INSIDE AND OUTSIDE.
LARGE MIRROR FEATURES LED LIGHTS AT BACK PERIMETER.
CUSTOM SINK by RIFRA, POLISHED CHROME FAUCET BY GESSI, CORIAN ACCESSORIES. ALL INCLUDED IN SALE PRICE.

516.380.8609 • cinzia@cfadesigns.net



11 West 25th Street, 3rd Floor, New York, NY 10010
t | 212.219.3637 • f | 212.219.3652 • w | www.cfadesigns.net

PROJECT:
CFA Designs Showroom
11 W 25th St, 3rd Floor
New York, NY 10010

ACCEPTED AND APPROVED BY CLIENT. CLIENTS RESPONSIBLE FOR
HOLDING TO ALL DIMENSIONED DRAWINGS AND CONTRACTOR TO
REVIEW. NO MANUFACTURING MAY COMMENCE UNTIL RETURNED
DRAWINGS AND APPROVAL ARE RECEIVED.

APPROVED BY _____

DATE _____

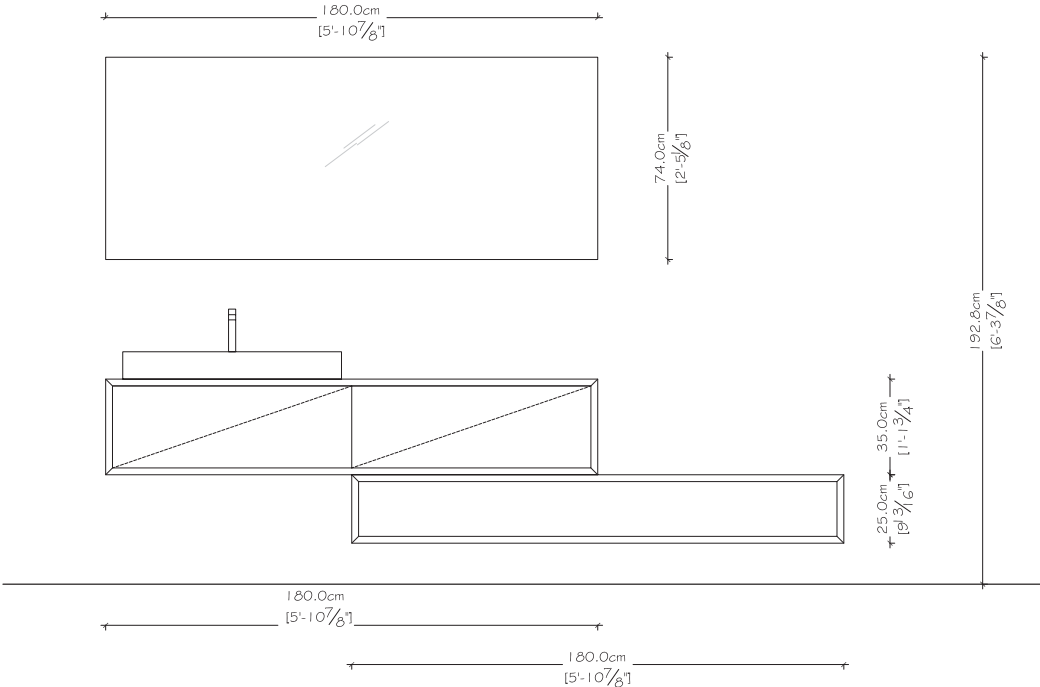
NO.	DATE	DESCRIPTION	DESIGNED BY	CHECKED BY
03				
02	2017.06.07	DESIGN DEVELOPMENT	LV	
01	2017.06.10	DESIGN DEVELOPMENT	LV	

SHEET TITLE:
CURRENT RIFRA WALL

PROJECT NO: CFA SHOWROOM 2017

SCALE: NTS

SHEET NO:



CFA BESPOKE CUSTOM CLOSET
100% MADE in ITALY



CFA DESIGNS BESPOKE CLOSET, LACQUERED THROUGHOUT, BRONZE COLOR FRAME DETAIL AND GOLD LEAF & CORK WALLPAPER INLAY AT DRAWERS AND TRIMS, SOLID WOOD LACQUERED DRAWERS, INTEGRATED VERTICAL LED LIGHTS THROUGHOUT, LED LIT BASE. HEIGHT - 2966mm (9' 8-3/4"). FULLY MANUFACTURED IN ITALY.

516.380.8609 • cinzia@cfadesigns.net